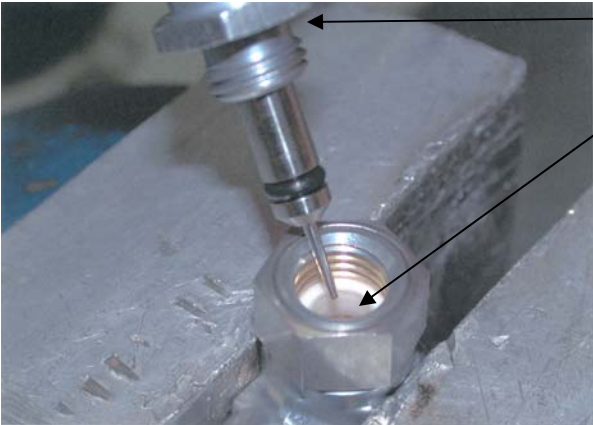


Date: March 18, 2007 TN 1129-01

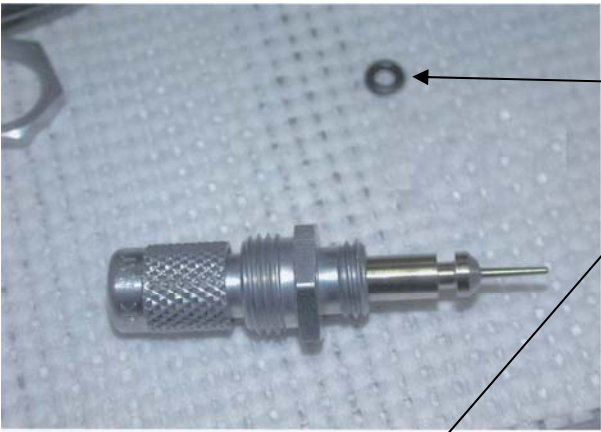
Subject: B2MA4 Flow Valve 'O' Ring Replacement

Models: MEK22-5032 Flow Valve Assembly

Scope: The flow valve 'O' Ring must be replaced with an EP composition seal for use with MEK.



- 1. Loosen nut and then remove needle valve from flow valve body.
- 2. Clean orifice inside body of any debris. Blow out and visually inspect for any blockage.



- 3. Remove 'O' Ring from needle valve and discard
- 4. Replace with #006 EP 'O' Ring; Lubricate 'O' Ring and use the installation tool as shown in picture to install the new EP 'O' Ring onto the needle valve.
- 5. Install the needle valve back into the flow valve body.

